

5/2 WAY PNEUMATIC AND SOLENOID POWER VALVES

五口二位氣壓閥及電磁閥



<u>5/2 way valve without subbase</u>	<u>不需外加供氣塊的五口二位閥</u>
Available in stand-alone and stacking versions, these 5/2 way are connected directly to the body. Extremely compact, the valve blocks are traversed by the pressure common and the two exhaust commons. They can easily install on plane.	提供單獨和堆疊兩種形式；堆疊時這些閥體直接以供氣端蓋連結非常簡潔，結合後的閥塊橫向形成一個壓力源共同孔道和兩個共同排氣孔道。同時這些閥塊能輕易地安裝在平面上。
The control function of the valves:	閥的控制有下列方式：
<ol style="list-style-type: none">1. Either by pneumatic piloting2. By a piloting solenoid by an electrical signal3. By auxiliary manual control for setting or adjustment	<ol style="list-style-type: none">1. 利用氣壓引導2. 利用電氣訊號以電磁引導作動3. 利用手動開關進行設定或調整

5/2 way power valve without subbase, size 1/4"

五口二位閥，接口 1/4"

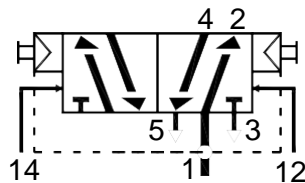
Stand-alone version, pneumatic or electrical piloting*

單獨型式，氣壓或電氣引導作動

size 1/4" BSPP threaded 接口 1/4"直牙



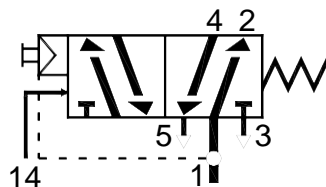
PVL-5D-1/4"



Symbol 符號	Function 功能	Reference 型號	Weight Kg 重量
	Bistable 雙穩態	PVL-5D-1/4"	0.230
	Pressure/ Pressure 雙邊氣壓引導		



PVL-5S-1/4"



	Monostable 單穩態	PVL-5S-1/4"	0.240
	Spring return 彈簧復歸		

* Piloting control of a valve can be either :

--Pneumatic by mounting one or two pilot connectors with M5 mm threaded :

--Electrical by mounting one or two 1w solenoid actuators

* 閥的引導控制有下列兩種選擇

---氣壓控制：安裝 1 或 2 個 M5 牙口之導氣塊

---電氣控制：安裝 1 或 2 個 1 瓦特電磁驅動器

5/2 way power valve without subbase, size 1/4"

五口二位閥，接口 1/4"

stacking version, pneumatic or electrical piloting*

堆疊型式，氣壓或電氣引導作動

size 1/4" BSPP threaded 接口 1/4"直牙



PVL-5D-1/4"M

Symbol 符號	Function 功能	Reference 型號	Weight Kg 重量
	Bistable		
	雙穩態	PVL-5D-1/4"M	0.185
	Pressure/ Pressure		
	雙邊氣壓引導		



PVL-5S-1/4"M

	Monostable		
	單穩態	PVL-5S-1/4"M	0.200
	Spring return		
	彈簧復歸		

* Each valve is supplied complete with two threaded rods for making up the tie rod assembly.

* Piloting control of a valve can be either :

--Pneumatic by mounting one or two pilot connectors with M5 mm threaded :

--Electrical by mounting one or two 1w solenoid actuators

* 每一個閥利用一對附螺紋的繫桿進行組裝

* 閥的引導控制有下列兩種選擇

---氣壓控制：安裝 1 或 2 個 M5 牙口之導氣塊

---電氣控制：安裝 1 或 2 個 1 瓦特電磁驅動器

5/2 way power valve without subbase, size 1/4"

五口二位閥，接口 1/4"

power valves general characteristics

滑軸閥一般特性

Type 型號	PVL-5D-1/4, PVL-5D-1/4M	PVL-5S-1/4, PVL-5S-1/4M
Permissible pressure 操作壓力	2 ~ 9bar (0.2 ~ 0.9Mpa)	3 ~ 9 bar (0.3 ~ 0.9Mpa)
Flow rate 流量	1400 NI/min	
Operating temperature 操作溫度	-5°C to +60°C	
Permissible fluids 容許流體	air or neutral gas 50µm lubricated or not 50µm 空氣或中性氣體有無潤滑均可	
Mechanical life (6 bar with dry air at 20°C) 機械壽命 (溫度 20°C 壓力 6bar 的乾 燥空氣)	30 million (3×10^7)	
Materials 閥體材質	Nylon-glass fiber impregnated 尼龍加玻璃纖維	

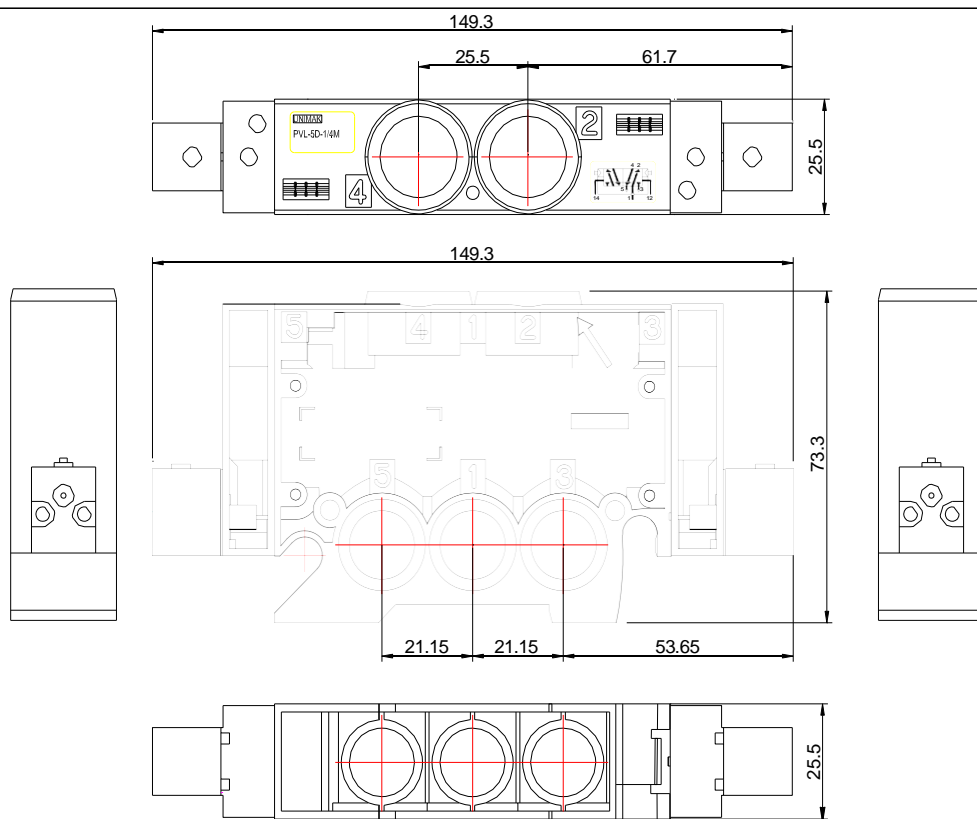
5/2 way power valve without subbase, size 1/4"

五口二位閥，接口 1/4"

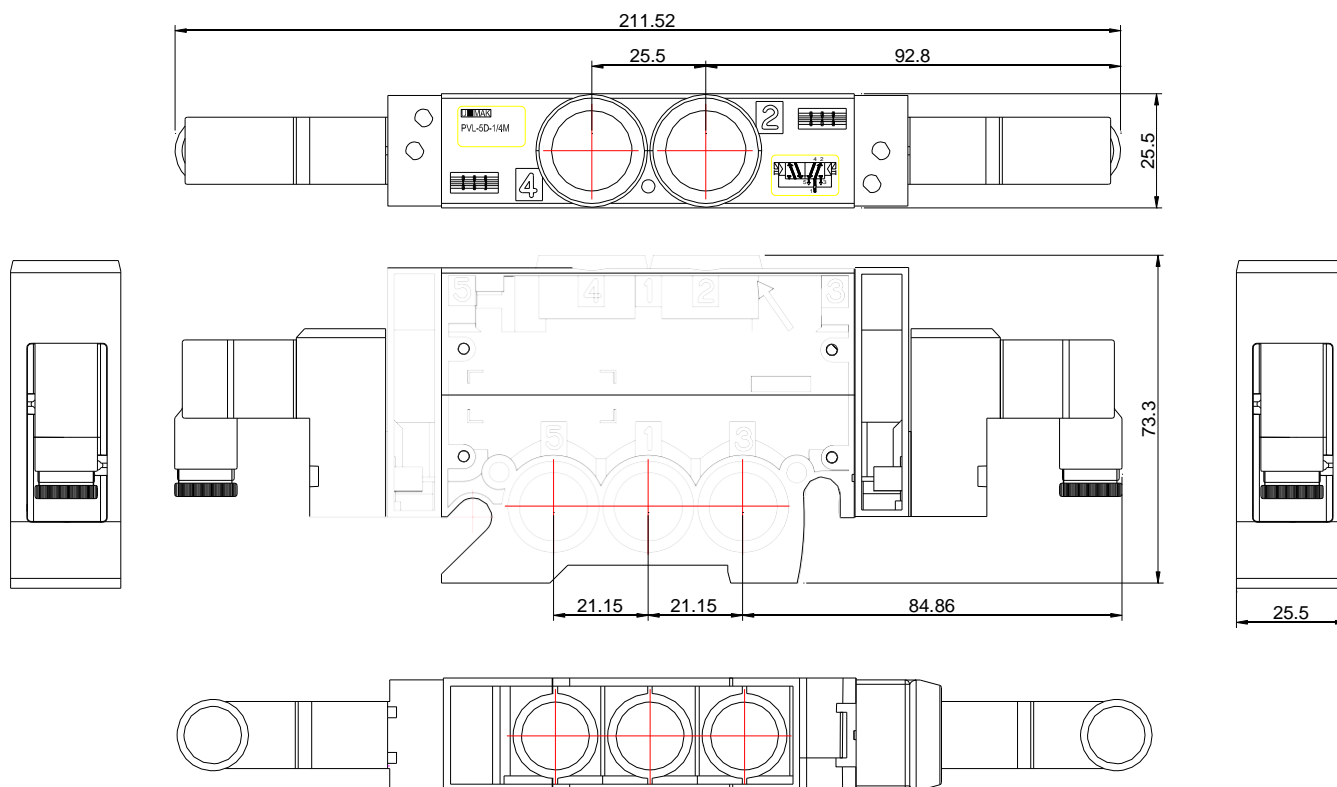
Mounting and dimensions

安裝及外型尺寸

PVL-5D-1/4, PVL-5D-1/4M pneumatic piloting



PVL-5D-1/4, PVL-5D-1/4M electrical piloting



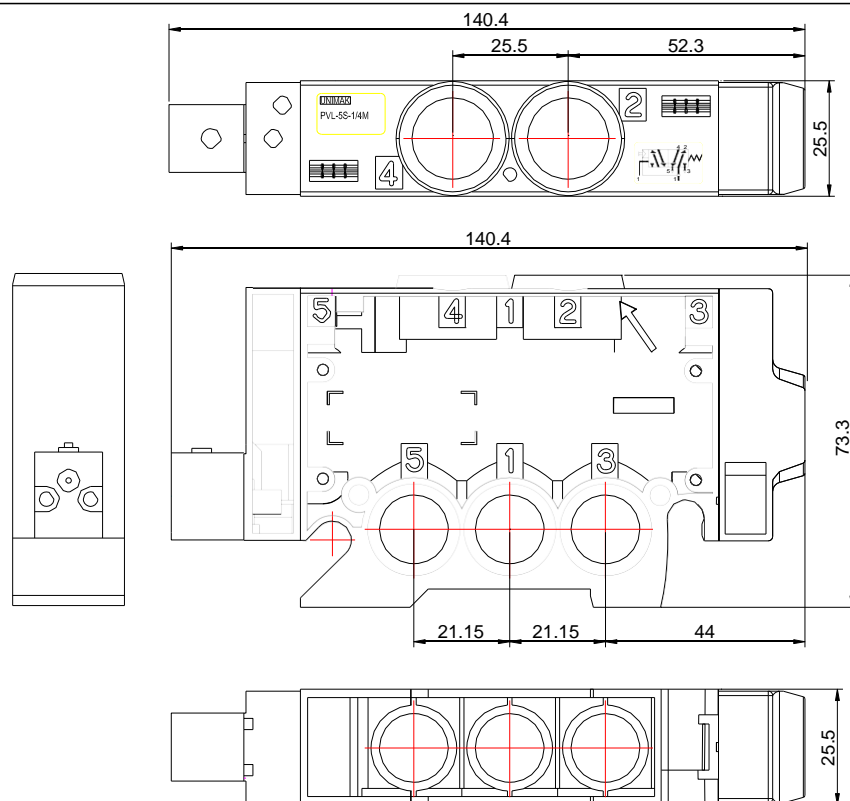
5/2 way power valve without subbase, size 1/4"

五口二位閥，接口 1/4"

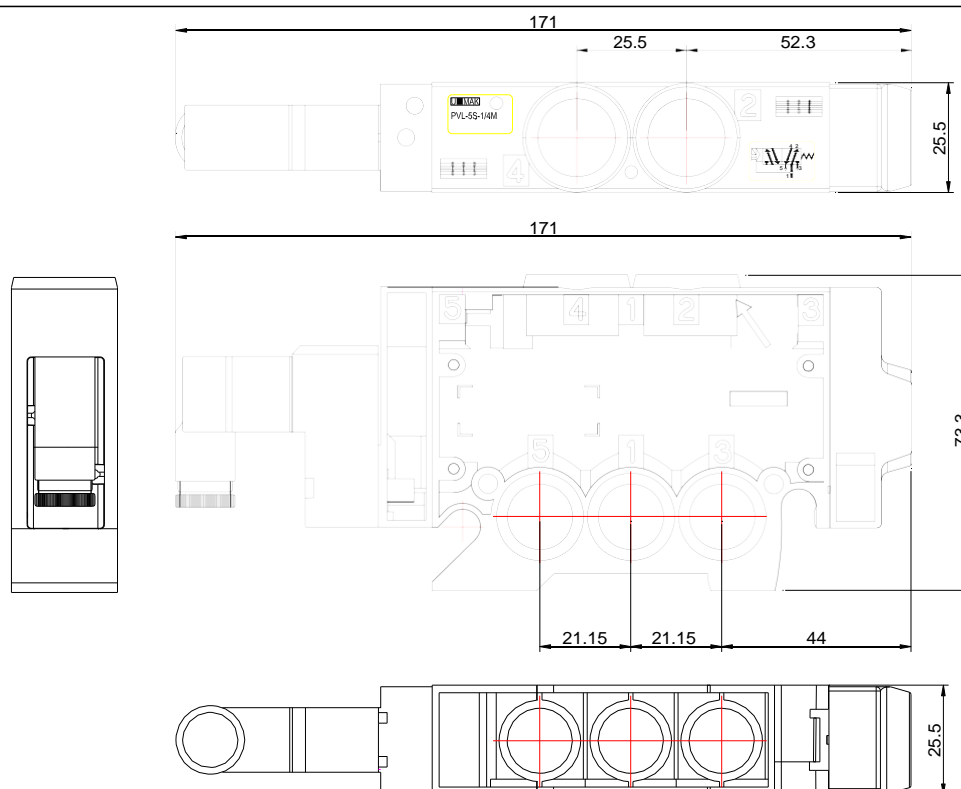
Mounting and dimensions

安裝及外型尺寸

PVL-5S-1/4, PVL-5S-1/4M pneumatic piloting



PVL-5S-1/4, PVL-5S-1/4M electrical piloting



5/2 way power valve without subbase, size 1/4"

五口二位閥，接口 1/4"

electrical piloting or pneumatic piloting system

電氣或氣壓作動系統



N338/1E8

Solenoid actuators with connector 電磁驅動器附接線盒

Symbol 符號	Voltage 電壓	Reference 型號	Weight Kg 重量
	24V DC	N338/1E8	0.051
	110V AC 50/60Hz	N336/1E8	0.051
	230V AC 50/60 Hz	N337/1E8	0.051

Connector for pneumatic piloting 氣壓導氣塊



PVA-P115

Function 功能	Connectors 接口	Reference 型號	Weight Kg 重量
Piloting connector with manual control 導氣塊附手動功能	Threaded M5 M5 牙口	PVA-P115	0.008

Head and tail sets for stacking valves 頭尾供氣組



PVL-C1829

Description 描述	Connectors 接口	Reference 型號	Weight Kg 重量
Dual air supply 雙邊進氣	G1/4" BSPP G1/4" 直牙	PVL-C1829	0.320

Solenoid actuators general characteristics

電磁驅動器一般特性

Type 型號	N338/1E8	N336/1E8	N337/1E8
Orifice 流孔	0.8mm		
Permissible pressure 操作壓力	0 ~ 10 bar (0 ~ 1Mpa)		
Flow rate 流量	20 NI/min		
Operating temperature 操作溫度	-5°C to +50°C		
Permissible fluids 容許流體	air or neutral gas 50µm lubricated or not 50µm 空氣或中性氣體有無潤滑均可		
Voltages 操作電壓	24V DC	110V AC 50/60Hz	230V AC 50/60Hz
Response time 反應時間	10~12ms		
Isolation class 絕緣等級	F class (155°C)		
Degree of protection 保護等級	IP 65		
Mechanical life (6 bar with dry air at 20°C) 機械壽命 (溫度 20°C 壓力 6bar 的乾 燥空氣)	50 million (5×10^7)		
Materials 材質	Nylon-glass fiber impregnated 尼龍加玻璃纖維		