

5/2 WAY SOLENOID POWER VALVES

五口二位電磁閥



<u>5/2 way valve without subbase</u>	<u>不需外加供氣塊的五口二位閥</u>
Available in stand-alone and stacking versions, these 5/2 way are connected directly to the body. Extremely compact, the valve blocks are traversed by the pressure common and the two exhaust commons. They can easily install on plane.	提供單獨和堆疊兩種形式；堆疊時這些閥體直接以供氣端蓋連結非常簡潔，結合後的閥塊橫向形成一個壓力源共同孔道和兩個共同排氣孔道。同時這些閥塊能輕易地安裝在平面上。
The control function of the valves:	閥的控制有下列方式：
1. By a piloting solenoid by an electrical signal 2. By auxiliary manual control for setting or adjustment	1. 利用電氣訊號以電磁引導作動 2. 利用手動開關進行設定或調整

5/2 way power valve without subbase, size 1/4"

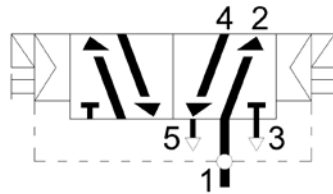
五口二位閥，接口 1/4"

Stand-alone version, electrical piloting*
 單獨型式，電氣引導作動

size 1/4" BSPP threaded 接口 1/4"直牙



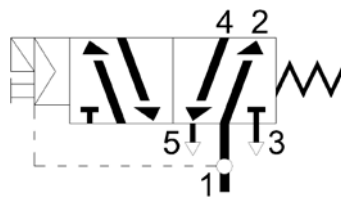
PVLB-5D-1/4"



Symbol 符號	Function 功能	Reference 型號	Weight Kg 重量
	Bistable 雙穩態	PVLB-5D-1/4"	0.215
	Pressure/ Pressure 雙邊氣壓引導		



PVLB-5S-1/4"



	Monostable 單穩態	PVLB-5S-1/4"	0.194
	Spring return 彈簧復歸		

* Piloting control of a valve can be :
 --Electrical by mounting one or two solenoid actuators

* 閥的引導控制有下列選擇
 ---電氣控制：安裝 1 或 2 個電磁驅動器

5/2 way power valve without subbase, size 1/4"

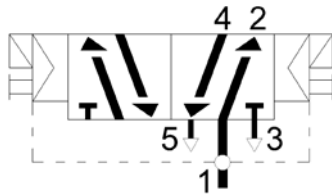
五口二位閥，接口 1/4"

stacking version, electrical piloting*
堆疊型式，電氣引導作動

size 1/4" BSPP threaded 接口 1/4"直牙



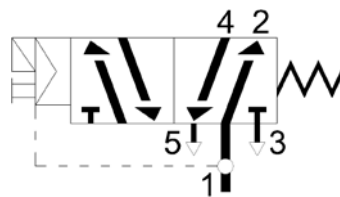
PVLB-5D-1/4\"M



Symbol 符號	Function 功能	Reference 型號	Weight Kg 重量
	Bistable 雙穩態	PVLB-5D-1/4\"M	0.205
	Pressure/ 雙邊氣壓引導		



PVLB-5S-1/4\"M



	Monostable 單穩態	PVLB-5S-1/4\"M	0.183
	Spring return 彈簧復歸		

* Each valve is supplied complete with two threaded rods for making up the tie rod assembly.

* Piloting control of a valve can be :

--Electrical by mounting one or two solenoid actuators

* 每一個閥利用一對附螺紋的繫桿進行組裝

* 閥的引導控制有下列選擇

---電氣控制：安裝 1 或 2 個電磁驅動器

5/2 way power valve without subbase, size 1/4” 五口二位閥，接口 1/4”

power valves general characteristics

滑軸閥一般特性

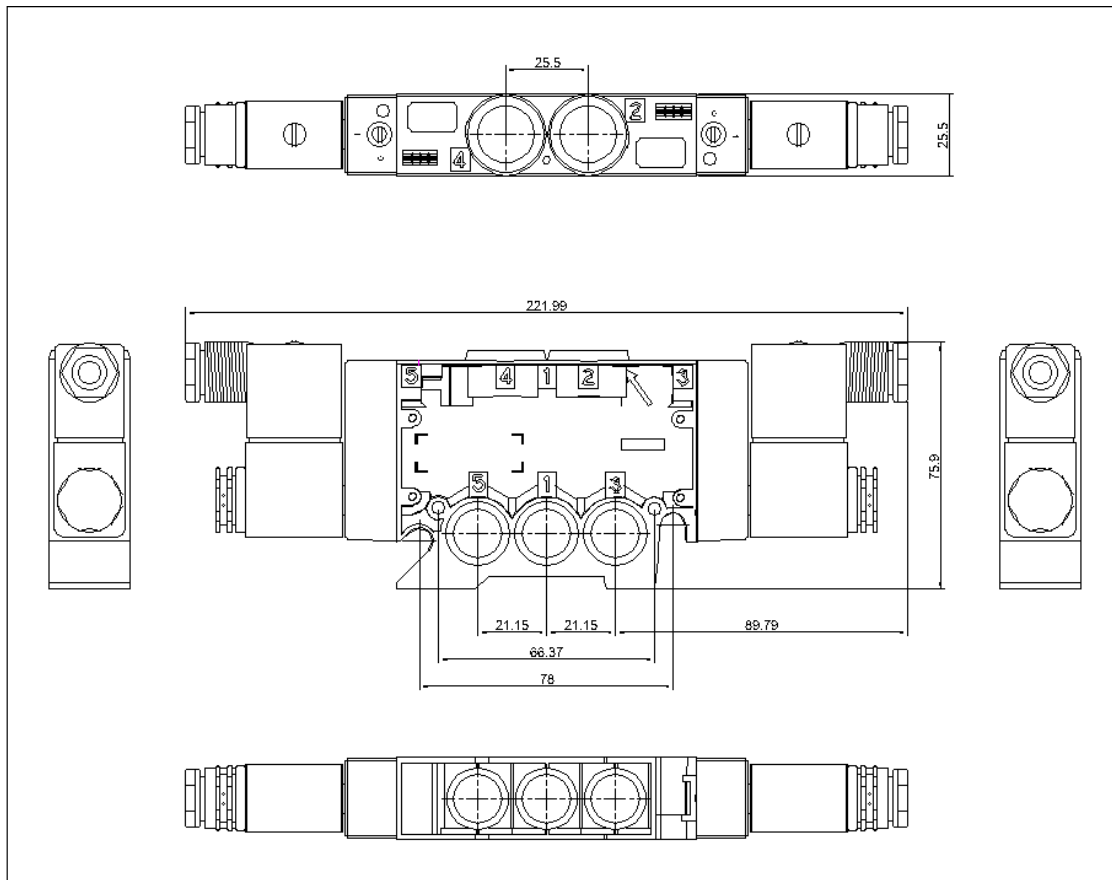
Type 型號	PVLB-5D-1/4, PVLB-5D-1/4M	PVLB-5S-1/4, PVLB-5S-1/4M
Permissible pressure 操作壓力	2 ~ 9bar (0.2 ~ 0.9Mpa)	3 ~ 9 bar (0.3 ~ 0.9Mpa)
Flow rate 流量	1400 NI/min	
Operating temperature 操作溫度	-5°C to +60°C	
Permissible fluids 容許流體	air or neutral gas 50µm lubricated or not 50µm 空氣或中性氣體有無潤滑均可	
Mechanical life (6 bar with dry air at 20°C) 機械壽命(溫度 20°C 壓力 6bar 的乾燥空氣)	30 million (3×10 ⁷)	
Materials 閥體材質	Nylon-glass fiber impregnated 尼龍加玻璃纖維	

5/2 way power valve without subbase, size 1/4"

五口二位閥，接口 1/4"

Mounting and dimensions
安裝及外型尺寸

PVLB-5D-1/4, PVLB-5D-1/4M electrical piloting

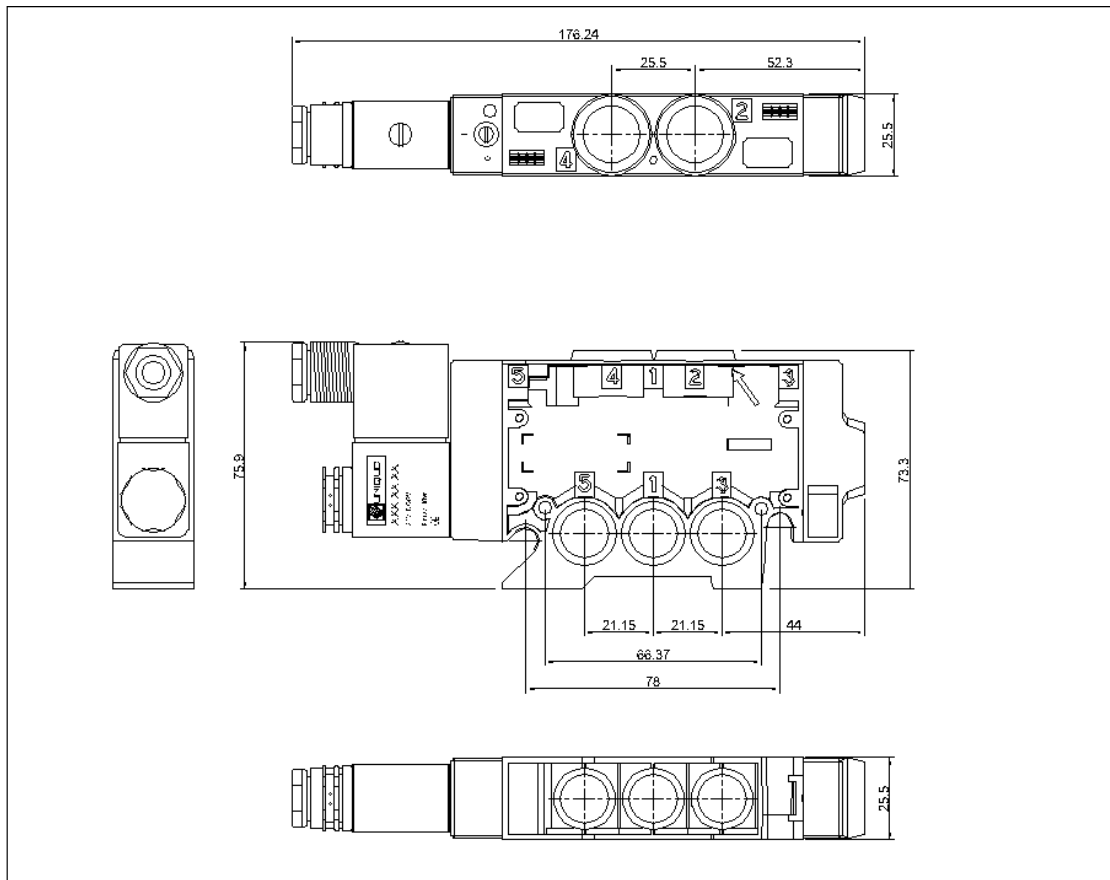


5/2 way power valve without subbase, size 1/4"

五口二位閥，接口 1/4"

Mounting and dimensions
安裝及外型尺寸

PVLB-5S-1/4, PVLB-5S-1/4M electrical piloting



5/2 way power valve without subbase, size 1/4” 五口二位閥，接口 1/4”

electrical piloting or pneumatic piloting system

電氣或氣壓作動系統



Solenoid actuators with connector 電磁驅動器附接線盒

Description 描述	Voltage 電壓	Reference 型號	Weight Kg 重量
Matching by the customer requirements 由客戶要求選配	24V DC	0709SD02403AM /DIN43620C DC	0.071
	110V AC 50/60Hz	0709SA11001AM /DIN43620C AC	0.071
	220V AC50/60 Hz	0709SA22001AM /DIN43620C AC	0.071



PVL-C1829

Head and tail sets for stacking valves 頭尾供氣組

Description 描述	Connectors 接口	Reference 型號	Weight Kg 重量
Dual air supply 雙邊進氣	G1/4” BSPP	PVL-C1829	0.320
	G1/4”直牙		